

AUGUST 27, 2008

Revisions	
Date	Comments

This Drawing is all forms, printed or electronic, is an instrument of professional service for use solely with respect to the Project, and shall not be used, in whole or in part, for any other Project, without the written consent of Westcott Site Services, Inc. The Engineer, Subcontractors, and other parties shall remain liable for all common law, statutory and other reserved rights, in addition to the copyright. The Engineer, Subcontractors, and other parties are authorized to use and reproduce applicable portions of this drawing for the Project, but shall not be permitted to use or reproduce any other portion of this drawing for any other Project without the written consent of Westcott Site Services, Inc. Work under the Contract Documents, Copyright © 2008.

PRIME, INC. - MULLIN LOT
Everett Street, Norwood & Westwood, MA
WESTCOTT SITE SERVICES ENGINEERS
60 Prospect Street, Waltham MA Ph 781-647-0062

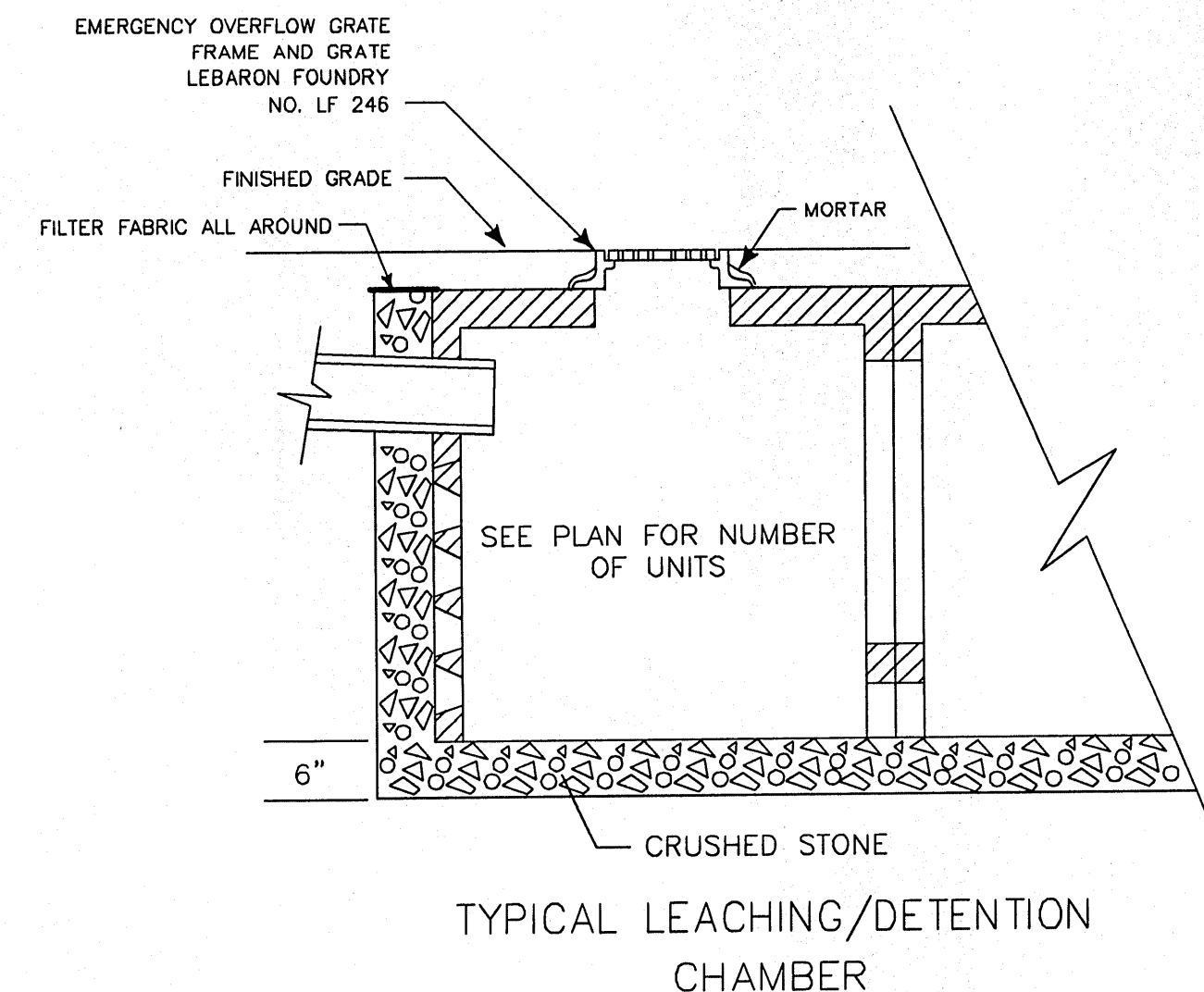
SITE UTILITIES

SCALE: 1" = 20'

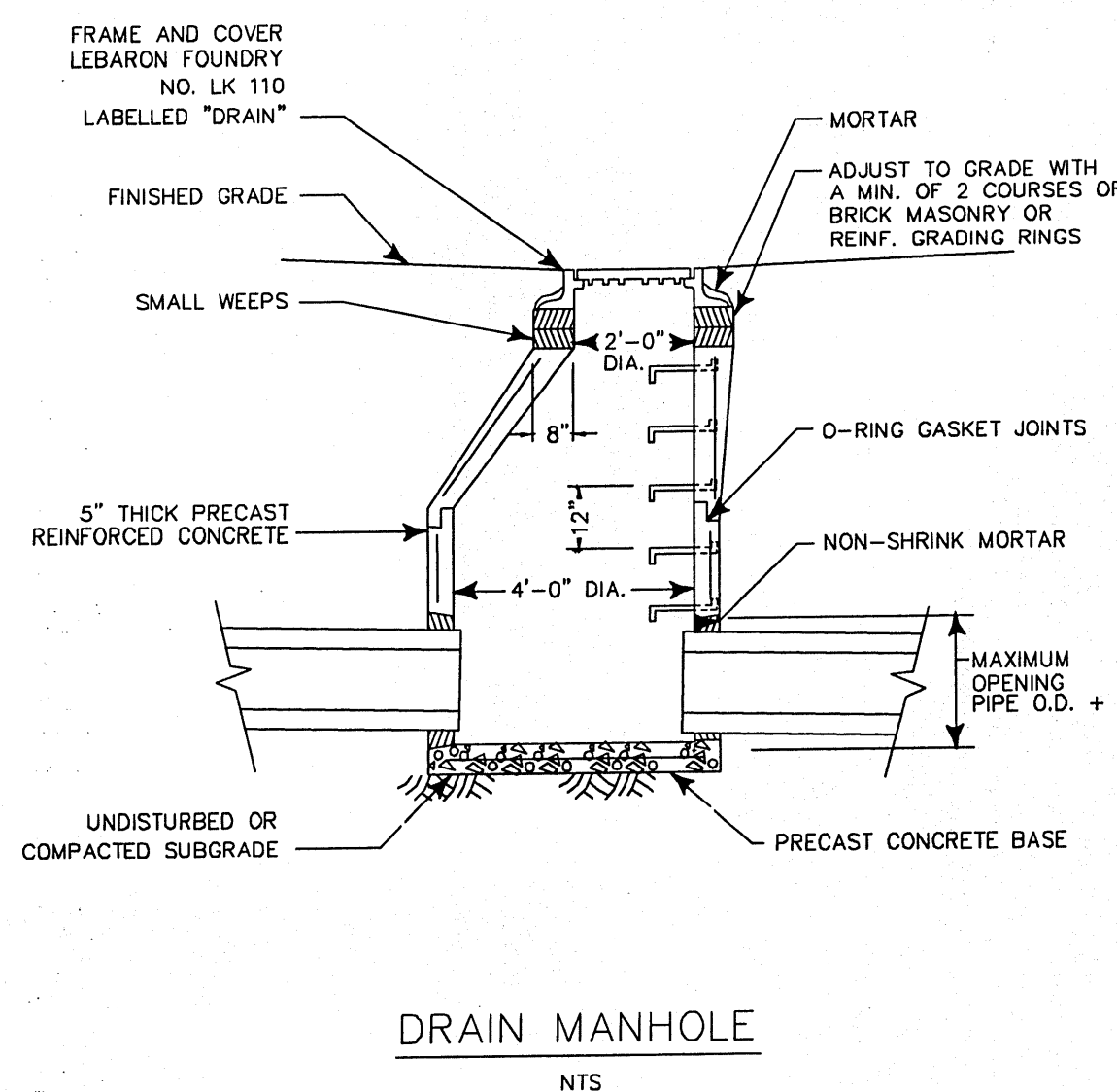
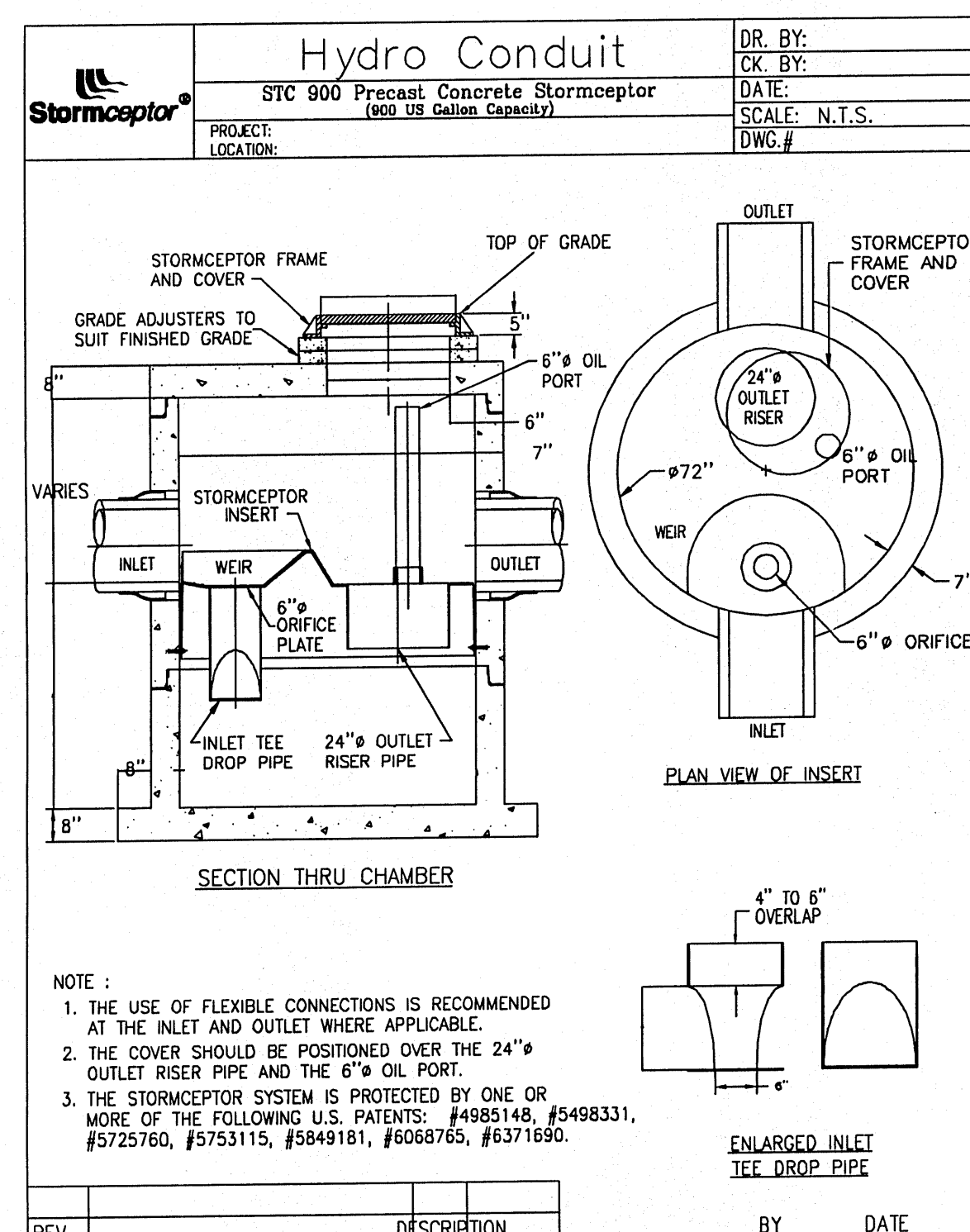
CD-4




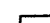
AUGUST 27, 2008

PRIME, INC. - MULLIN LOT SITE UTILITIES

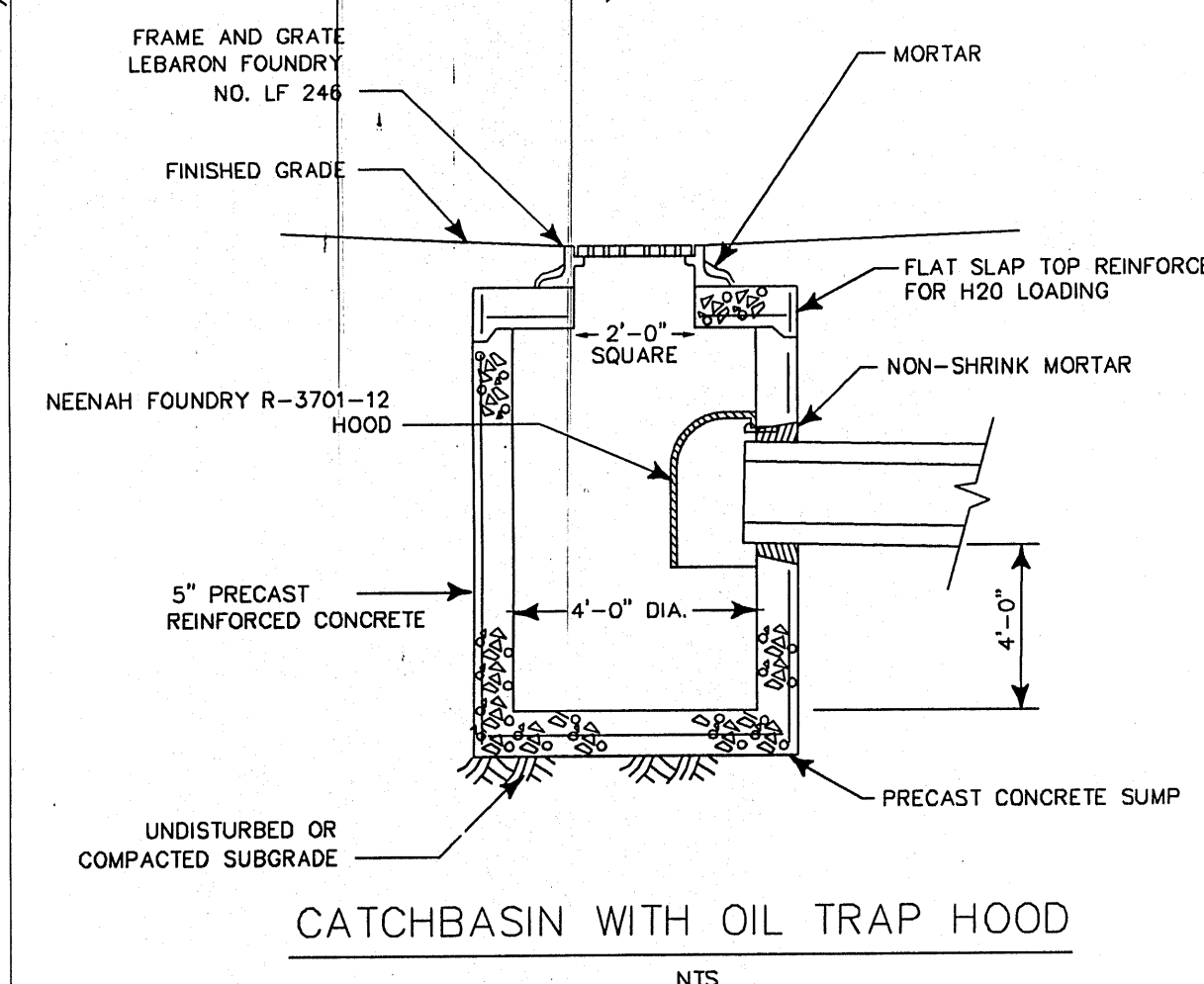
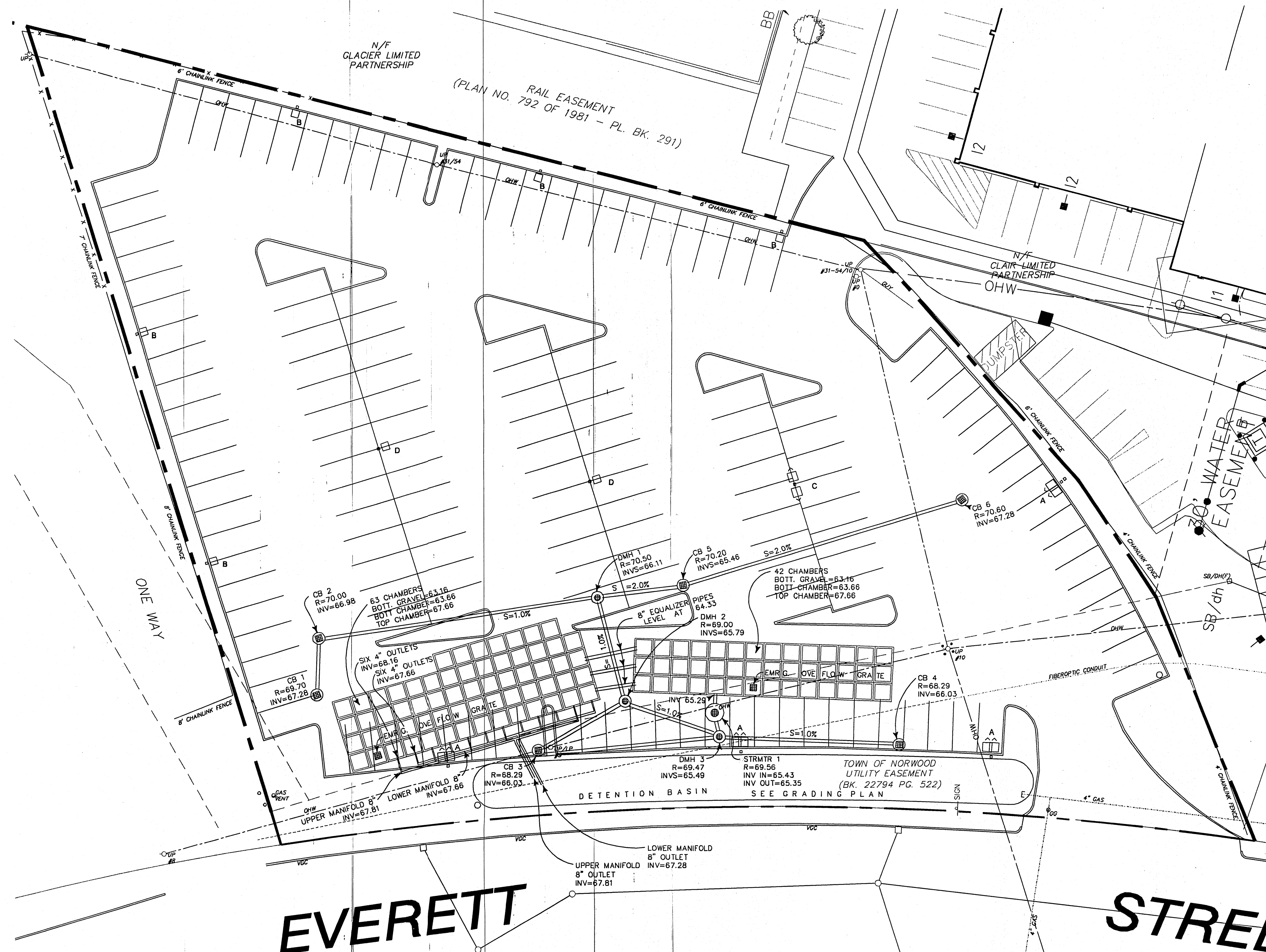


CHAMBERS ARE "LEACHING GALLEYS" MADE BY AMERICAN CONCRETE INDUSTRIES, AUBURN, MAINE, 207-784-1388.



LUMINAIRE SCHEDULE									
Symbol	Label	Qty	Catalog Number	Description	Lamp	File	Lumens	LLF	Watts
	A	4	US Architectural # (2)SVL27-ASY- 1000MH-FG	Twin 27" SQ X 15", 1000 watt MH Type III full cutoff with house side shield oriented together on mounting arm, mounted at 24"	2 @ M1000 rated at 105000 lumens	SVL27-3S- 1KM-FG.txt	105000	0.70	2106.8
	C	1	US Architectural # (2)SVL27-ASY- 1000MH-FG	Twin 27" SQ X 15", 1000 watt MH Type III full cutoff oriented at 180 degrees mounted at 24"	2 @ M1000 rated at 105000 lumens	SVL27-3S- 1KM-FG.txt	105000	0.70	2106.8
	D	2	US Architectural # SVL27-VSQ- 1000MH-FG	27" SQ X 15", 1000 watt MH Type V full cutoff mounted at 24"	1 @ M1000 rated at 105000 lumens	SVL27-5-1KM- FG.txt	110000	0.70	1010
	B	6	US Architectural #SVL22-ASY- 250MH-FG-HS	22" SQ X 14", 250 watt MH Type III full cutoff with house side shield mounted at 18"	1 @ M250 rated at 20500 lumens	SVL22-3S-40M- FG.txt	20500	0.70	280

STATISTICS					
Description	Symbol	Avg	Max	Min	Max/Min
Parking Lot	X	8.4 ft	30.8 ft	0.0 ft	N/A
Street Zone	X	10.5 ft	30.2 ft	0.1 ft	302.0:1



- LEGEND**
- 12" HDPE (ALL PIPE TO BE 12" HDPE EXCEPT WHERE SHOWN OTHERWISE)
 - PROPOSED MH RIM
 - PROPOSED CATCHBASIN RIM
 - PROPOSED LEACHING/DETENTION CHAMBER
1. FOR NOTES SEE SHEET CD-2.
2. LIGHTING TO BE POWERED BY NEW CIRCUITS AND FEEDS FROM EXISTING POWER SOURCE IN OWNER'S BUILDING. THIS WORK IS NOT COVERED BY THESE DRAWINGS.